



A: Expectations

Complete the following in order of priority:

- Emergency items such as spills, near misses, or marine casualties
- Additional observations as requested by ADEC
- Items of opportunity/special circumstances
- Daily observation checks for each section
- Seasonal checklists
- Remaining items in WW and Oil sections
- Remaining items in Safety, Opacity, Waste, and Sanitation sections

If an item is unsatisfactory, include written comments describing the conditions that have made that item unsatisfactory. Be as specific as possible in your comments. Checking an item but leaving no comments indicates the item was satisfactory.

Consult the guidebook for full citations and information relating to each checked item.

A: General Information

A.1.a Date of Daily Report:	Aug 11, 2019
A.1.b Ship name:	Princess Coral
A.1.b Ship code:	PCR
A.1.c Trip type:	VO
A.1.d Ocean Ranger name:	steven.chouinard
A.1.e Location - port name or general location:	SKG
A.1.f Date boarded vessel:	Aug 9, 2019
A.1.g Total count onboard - passengers and crew [46 USC Sec 3501]:	3021
A.2 Discharge in Alaska on report day?	No
A.3 Sample Taken (Y/N)- If yes, fill in the following	No
A.4 Waste Offloads (Y/N)- If yes, fill in a-d below	No
A.4.a Amount offloaded (provide volume/weight and units of measurement)	N/A
A.4.b Type of waste offloaded	N/A
A.4.c Contractor used (name the contract company offloading waste)	N/A
A.4.d Offloading method (such as barge, forklift at dock, handheld buckets)	N/A
A.5 Reportable Illness if above 2% threshold and required to report to CDC IAW [42 CFR 71.21]	No
A.6 Scrubber in use?	No
A.6.1 If yes, what type of scrubber on board?	Ecospray
A.6.2 When was the scrubber in use?	No scrubbers today, MGO only.
A.6.3 For each scrubber, describe the diesel generator, and whether it is an open-loop or closed-loop system.	Generators 1 and 2 are Wartsila 16V46C units, and #3 is a Wartsila 12V46F. All scrubbers are open loop.
A.6.4 Is the bleeder valve open, and if so, for what timeframe (only for closed-loop systems)?	N/A
A.7 Describe fuel type(s) used and switchovers during the 24-hour report day. Include times for each fuel type and the diesel generator units for each.	HFO 1.68% MGO 0.0008%.
A.8 Other report(s) worked on today:	None
A.9 Who was contacted onboard regarding any potential noncompliant item?	Discussed w/ the EO, more information regarding the black out incident in JNU on 081019. Qualifying for a near miss incident.

A: Comments & Photos

General Observation Comments

081119 - Coral Princess in SKG, 0630 - 2030. Crew drills held in the AM.

Additional information regarding blackout incident on 081019.

*** Item of Interest: Updates according to the NAPA (electronic time table.)

*** Sect. 5.1.b - loss of maneuverability.

The following events are in chronological order.

- 1927 DG2 put online.
- 1937 ship disconnects from shore power.
- 2015 DG3 online.
- 2041 Depart Dock.
- 2047 Blackout condition experienced.
- 2047 Gas Turbine started.
- 2051 Announced power restoration and incidentals broadcast throughout the vessel.
- Propulsion restored @ 2055.
- 2nd announcement 2056.
- 2106 DG1 + GT online together.
- *** Sect. 1.2.g, no anchor chain wash down.
- Anchor retrieved (without rinsing) @ 2111.
- 2148 Full away on passage.
- USCG notified by phone ~ 2200. *** Not in NAPA, EO obtained this information from the Bridge.
- *** Incident may qualify as a "NEAR MISS" as defined within the accountabilities of HESS MS.

Photo 1

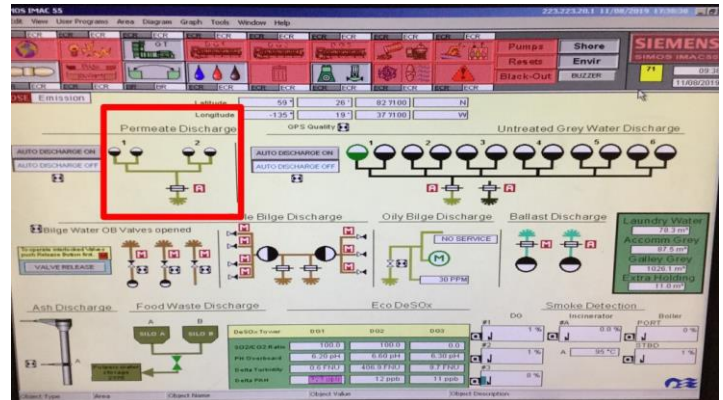


Photo 1 Caption - State specific location in detail, equipment description (if applicable), and date and time photo was taken.

Permeate discharge Ovbd valves sec'd.

Photo 2



Photo 2 Caption - State specific location in detail, equipment description (if applicable), and date and time photo was taken.

Bilge ovbd locked closed.

Photo 3



Photo 3 Caption - State specific location in detail, equipment description (if applicable), and date and time photo was taken.

No leaks detected in the purifier room.

Photo 4

M/V CORAL PRINCESS											
Date	State Position	Latitude	Longitude	Wind	Wave	Temp	Humidity	Pressure	Salinity	Clouds	Visibility
Wed 07-Aug-19	VANCOUVER	49 53.00	12 16.00	10	1.5	15.0	75	1013.0	35.0	100	10.0
Thu 08-Aug-19	Open Sea	50 00.00	12 15.00	10	1.5	15.0	75	1013.0	35.0	100	10.0
Fri 09-Aug-19	SECHWAN	50 00.00	12 15.00	10	1.5	15.0	75	1013.0	35.0	100	10.0
Sat 10-Aug-19	JAREDA	50 00.00	12 15.00	10	1.5	15.0	75	1013.0	35.0	100	10.0
Sun 11-Aug-19	GLACIER BAY	50 00.00	12 15.00	10	1.5	15.0	75	1013.0	35.0	100	10.0
Mon 12-Aug-19	COLLEGE FERRIS	50 00.00	12 15.00	10	1.5	15.0	75	1013.0	35.0	100	10.0
Tue 13-Aug-19	SECHWAN	50 00.00	12 15.00	10	1.5	15.0	75	1013.0	35.0	100	10.0
TOTAL											

Photo 4 Caption - State specific location in detail, equipment description (if applicable), and date and time photo was taken.

Matrix for cruise itinerary seen posted in the ECR.

Photo 5



Photo 5 Caption - State specific location in detail, equipment description (if applicable), and date and time photo was taken.

Empty aerosol cans segregated in the Recycling Center.

1.1 WW Daily Observations

1.1.a Checked?

Yes

Remarks

NAPA review, sat.

1.1.b Checked?

Yes

Remarks

Volumes present + WW types.

1.1.c Checked?

Yes

Remarks

None

1.1.d Checked?

Yes

Remarks

Nothing unusual observed. Ovbd skin valves closed.

1.1.e Checked? Yes
Remarks No Discharge abiding vessel.

1.2 General WW and EPA VGP

1.2.a Checked? Yes
Remarks >12

1.2.b Checked? Yes
Remarks No chemicals used.

1.2.c Checked? Yes
Remarks On

1.2.d Checked? Yes
Remarks No suspicious activity observed.

1.2.e Checked? Yes
Remarks Nothing ovbd in AK.

1.2.f Checked? Yes
Remarks Approved VGP cleaners, port agent permitting.

1.2.g Checked? Yes
Remarks See comments section.

1.2.h Checked? Yes
Remarks None today.

1.3 Permitted Vessels

1.4 Non-Disch VsIs and Permitted VsIs in no-disch areas

1.4.a Checked? Yes
Remarks No WW discharges suspected.

1.4.b Checked? Yes
Remarks All appear closed in port.

1.4.c Checked? Yes
Remarks Capacity seems sufficient.

2.1 Solid Waste (Garbage) Daily

2.1.a Checked? Yes
Remarks GRB electronic version in good general order.

2.1.b Checked? Yes
Remarks No garbage offloaded in SKG.

2.1.c Checked? Yes
Remarks Certified electronically.

2.1.d Checked? Yes
Remarks Management plans are used.

2.2 General Solid Waste (Garbage)

2.2.a Checked? Yes
Remarks Maintenance management, sat.

2.2.b Checked?

Yes

Remarks

No plastics seen going over.

2.2.c Checked?

Yes

Remarks

Chute has double padlocks.

3.1 Haz Waste Daily

3.1.a Checked?

Yes

Remarks

Records available in the Recycling Center.

3.1.b Checked?

Yes

Remarks

No hazmat offloaded.

3.1.c Checked?

Yes

Remarks

Storage unit is typical of the industry, w/
lock in place.**3.2 General Haz Waste and Haz Materials**

3.2.a Checked?

Yes

Remarks

Manifests are kept on hand.

3.2.b Checked?

Yes

Remarks

Treatment systems observed, seems sat.

3.2.c Checked?

Yes

Remarks

Nothing suspicious observed.

3.2.d Checked?

Yes

Remarks

Seems standard.

3.2.e Checked?

Yes

Remarks

Segregation observed.

3.2.f Checked?

Yes

Remarks

Equipment is in working order.

4.1: Visible Emissions; Air Quality

4.1.a Checked?

Yes

Remarks

GO used today to minimize.

4.1.b Checked?

Yes

Remarks

Through corporate office.

4.1.c Checked?

Yes

Remarks

No incinerator use in ports.

4.1.d Checked?

Yes

Remarks

Not suspected.

4.1.e Checked?

Yes

Remarks

MGO

5.1: Safety

5.1.a Checked?

Yes

Remarks

No unsafe conditions observed.

5.1.b Checked?

Yes

Remarks

No casualties were reported. Have a complete rundown of NAPA events in the main comments section for yesterday's blackout incident.

5.1.c Checked?

Yes

Remarks

PPE, sat.

6.1: Potable Water (if applicable)

6.2: Swimming Pool & Spa Sanitation; Safety

6.2.a Checked?

Yes

Remarks

Recreational water filtration systems appear to be working.

6.2.b Checked?

Yes

Remarks

Automated

6.2.c Checked?

Yes

Remarks

Manual testing equipment onboard.

7.1: Oil Pollution; Fuel, Daily

7.1.a Checked?

Yes

Remarks

No oily sheens observed.

7.1.b Checked?

Yes

Remarks

ORB, sat.

7.1.c Checked?

Yes

Remarks

ORB, entries are legible.

7.1.d Checked?

Yes

Remarks

No external leaks detected.

7.2: Oil Pollution; OWS

7.2.a Checked?

No

Remarks

Not observed.

7.2.b Checked?

No

Remarks

Not observed.

7.2.c Checked?

No

Remarks

Not observed.

7.2.d Checked?

No

Remarks

Not observed.

7.2.e Observed?

No

Remarks

Not observed.

7.2.f Checked?

No

Remarks

Not observed.

7.2.g Checked?

No

Remarks

Not observed.

7.2.h Checked?

No

Remarks

Not observed.

7.2.i Checked?

No

Remarks	Not observed.
7.2.j Checked?	Yes
Remarks	Bilges ovbd locked shut.

7.3: Bilges

7.3.a Checked?	Yes
Remarks	No issues with bilge areas.
7.3.b Checked?	Yes
Remarks	No issues with bilge areas.
7.3.c Checked?	Yes
Remarks	No issues with bilge areas.
7.3.d Checked?	Yes
Remarks	No issues with bilge areas.
7.3.e Checked?	No
Remarks	Not observed.
7.3.f Checked?	Yes
Remarks	Locked closed.

7.4: Oil Sludge Handling

7.4.a Checked?	Yes
Remarks	ROB.
7.4.b Checked?	Yes
Remarks	Sludge records in the ORB.
7.4.c Checked?	Yes
Remarks	No blending.

7.5: Lifeboats; security vessels, Tendering Boats; Deck

7.5.a Checked?	Yes
Remarks	No issues with tenders.
7.5.b Checked?	Yes
Remarks	No messes seen on deck.
7.5.c Checked?	Yes
Remarks	No issues raised.

7.6: Oil to Sea Interface

7.6.a Checked?	Yes
Remarks	No leaks detected.
7.6.b Checked?	Yes
Remarks	Records kept.
7.6.c Checked?	Yes
Remarks	No leaks detected.

Z.1: Summary, Signature & Submit

Does this report contain an observation of interest? If you had an access issue, that is considered an observation of interest and you should select YES. Please enter a brief description in the comments, and also fill out a

*Urgent!

General Access Report.

Ranger Signature

A handwritten signature consisting of the letters 'S' and 'U' in a cursive, looped style.